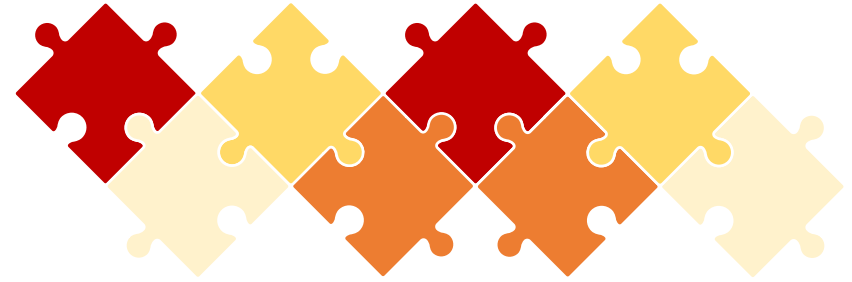


The logo features the word "Coveract" in a bold, italicized, black sans-serif font. An orange arrow graphic starts from the bottom of the letter 'a' and points towards the top right, ending near the letter 't'. Below the main text, the tagline "QUALITÀ PRODOTTO & PROCESSO" is written in a smaller, black, all-caps sans-serif font. The entire logo is set against a background of white, wavy, horizontal lines that sweep across the page.

***Coveract***<sup>®</sup>  
QUALITÀ PRODOTTO & PROCESSO

# OUR COMPANY

**COVERACT** IS A PROVIDER OF OPERATIONAL QUALITY MANAGEMENT AND CONSULTING SOLUTIONS



## Our strengths:

- Responsiveness to customer requests
- Agility in finding solutions
- Ability to adapt to the context in which we operate

# COMPETENCE IS ROOTED IN LONGSTANDING EXPERTISE

Founded in 2008 by Cav. Carlo della Selva following decades of experience gained in Multinationals, Car Makers, and Certification Companies where he held various positions, in particular in Quality, Product and Process Development. Coveract is structured as an s.r.l with two partners, and operational offices both in Italy and abroad so as to operate in close proximity to major clients.

# OUR SERVICES



- 01** Inspection and containment
- 02** Quality resident
- 03** Quality engineering support
- 04** Process auditing

- 05** Consulting
- 06** Training
- 07** Cost reduction
- 08** Logistic center and outsourcing and SC management



## **CONTAINMENT**

Coveract srl is accredited by:

- ▶ STELLANTIS (to perform products containments 3CPR2)
- ▶ IVECO CSL2-CSL3
- ▶ LAMBORGHINI
- ▶ FERRARI CSL2-CSL3
- ▶ WHIRLPOOL

## REWORKS

- ▶ We can rework , repair and validate according to customer specifications

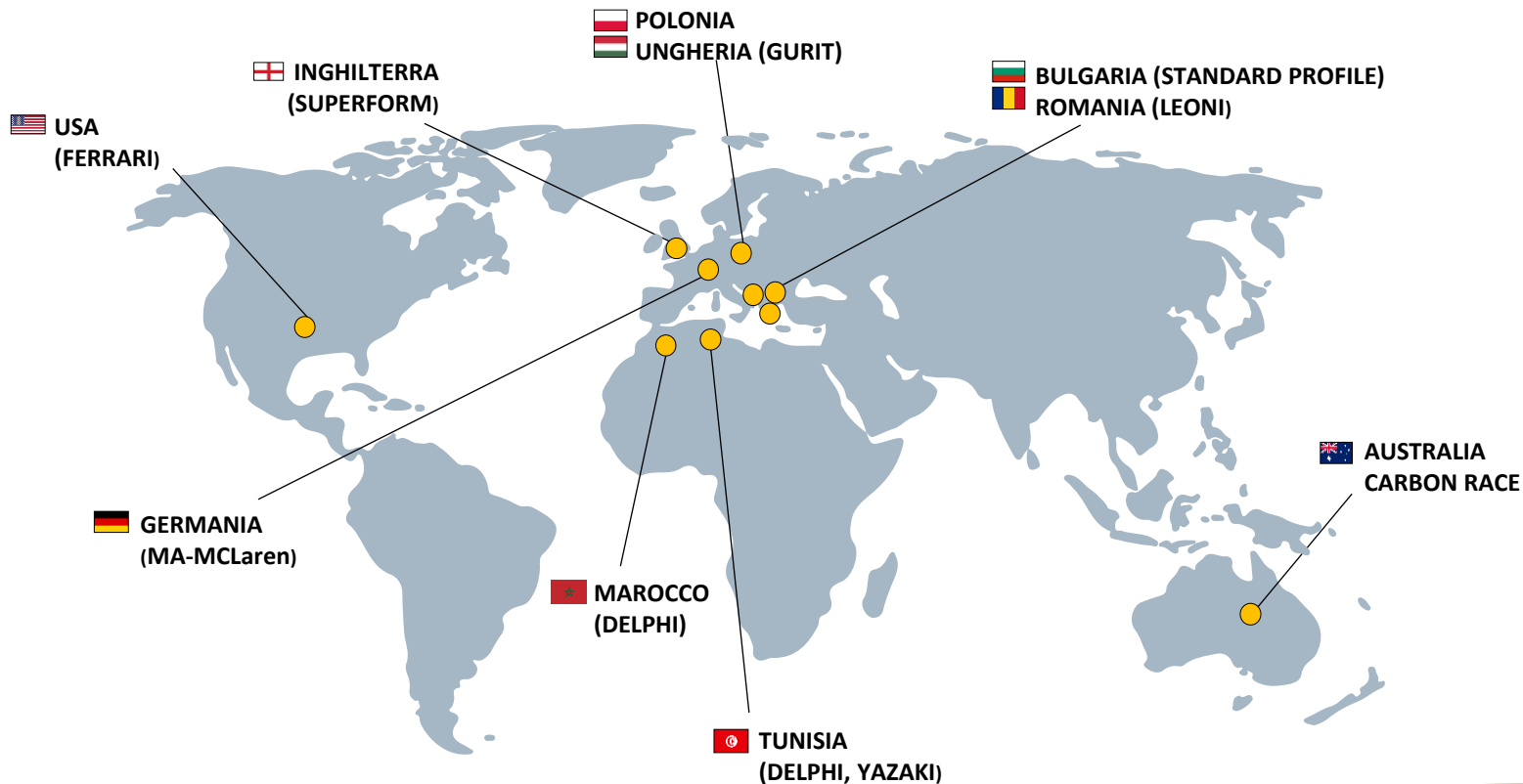


## SORTING AND CHECKING

- ▶ Re-flash using vector v - flash software on contra units
- ▶ Metrology
- ▶ Magnetoscopy
- ▶ Metallurgical control using an endoscope optical instrument



## Worldwide most recent in-house operations





## QUALITY ENGINEERING SUPPORT

- ▶ Developing Quality system and support to achieve ISO certifications IATF16949 and UNI EN ISO 9001
- ▶ Problem solving techniques
- ▶ Developing DFMEA- PFMEA- Lessons Learned- Best practices.
- ▶ Sourcing Packages
- ▶ Developing SPC
- ▶ KPI definition and monitoring





## CONSULTING

- ▶ Product Development (APQP Advanced Product Quality Planning Methodology).
- ▶ Make or buy analysis and cost engineering
- ▶ IMDS International Material Data System.
- ▶ Logistics and Supply Chain Management.
- ▶ **Consultancy to obtain certification** for UNI ISO 9001:2015, 14001:2015, 45001:2018, IATF 16949:2016, Second part AUDITVDA 6.3, INTEGRATED SYSTEM



## TRAINING

- ▶ Fast training of operators for main core tools, APQP, PPAP, FMEA, IMDS, PDCA, SPC, KAIZEN
- ▶ Native English technical speaker
- ▶ UNI EN ISO 9001 - IATF 16949
- ▶ On the job training



## ***COST REDUCTION***

- ▶ Cost reduction and value optimization
- ▶ Raw material and semi-finished stock optimization
- ▶ Production flow analysis and optimization
- ▶ Scrap and reworks reduction
- ▶ Finished parts stock reduction
- ▶ Transportation cost reduction



## LOGISTIC CENTER AND SC management



**Coveract** has an equipped warehouse for safe and temporary storage of goods, for rework activities, product conformity certification and subsequent delivery to the final customer.

- ▶ Layout optimization
- ▶ Control, certification, assembly and site reviews
- ▶ Warehouse services
- ▶ Logistic flow organization
- ▶ Kitting
- ▶ Re-packaging
- ▶ Supply Chain Management



## OPERATIONAL TEAM COMPOSITION



49

DIRECT  
EMPLOYEES

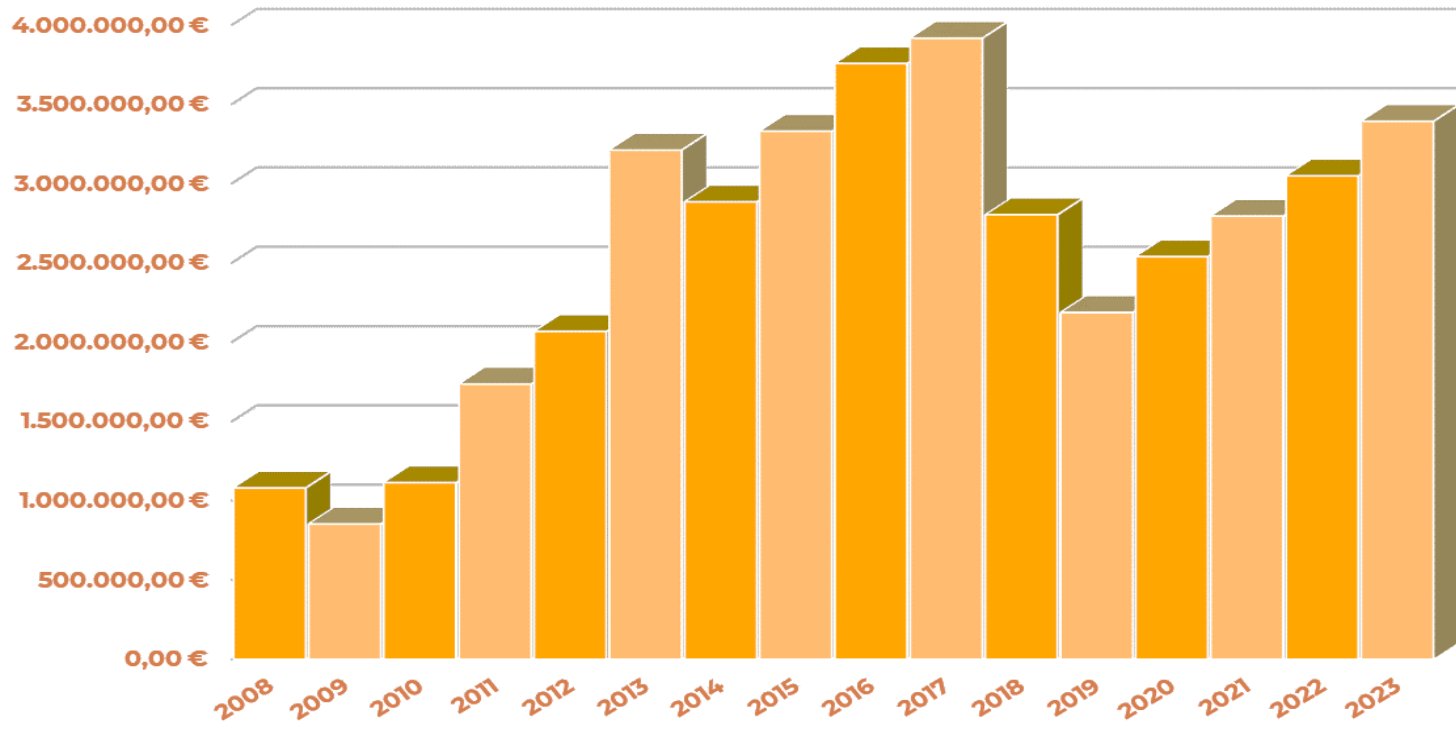
50

EXTERNAL  
COLLABORATORS

18

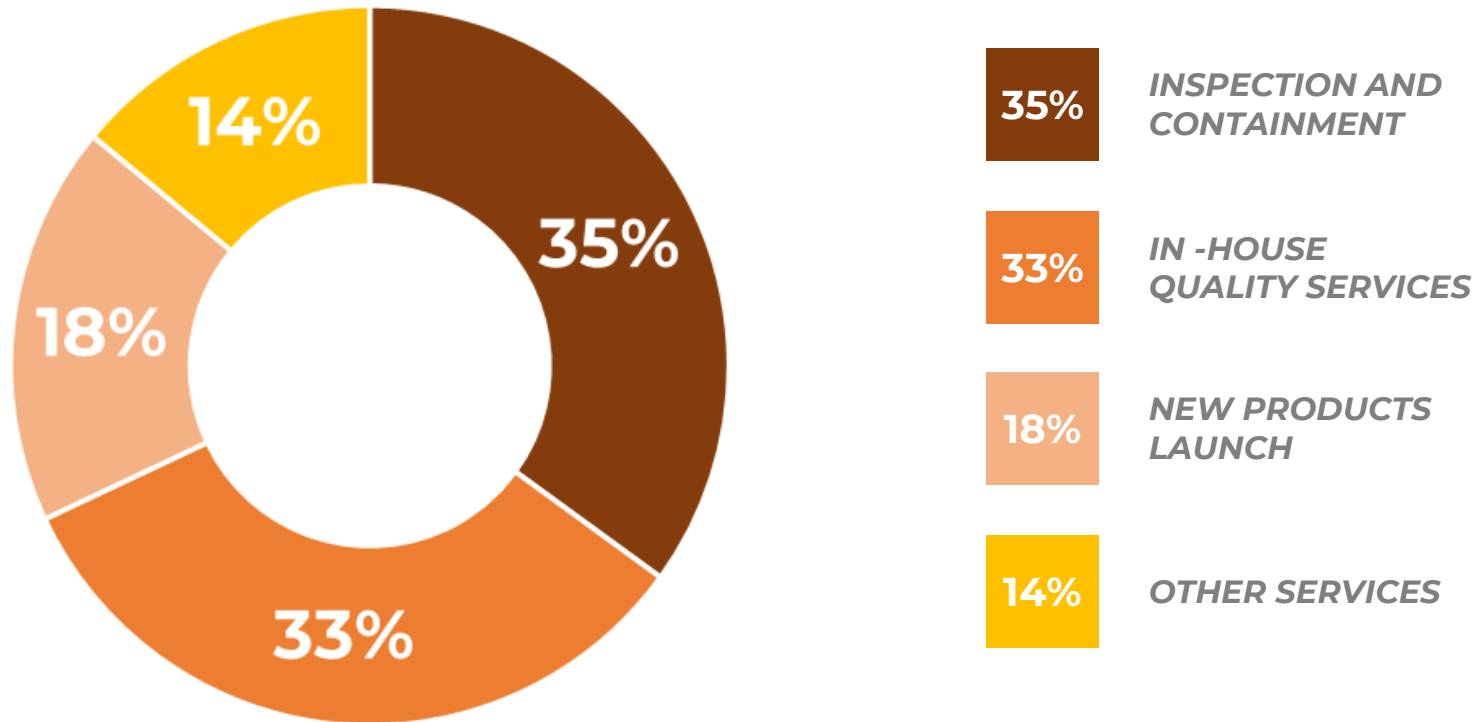
HIGH  
PROFESSIONAL  
PROFILE

## TURNOVER TREND

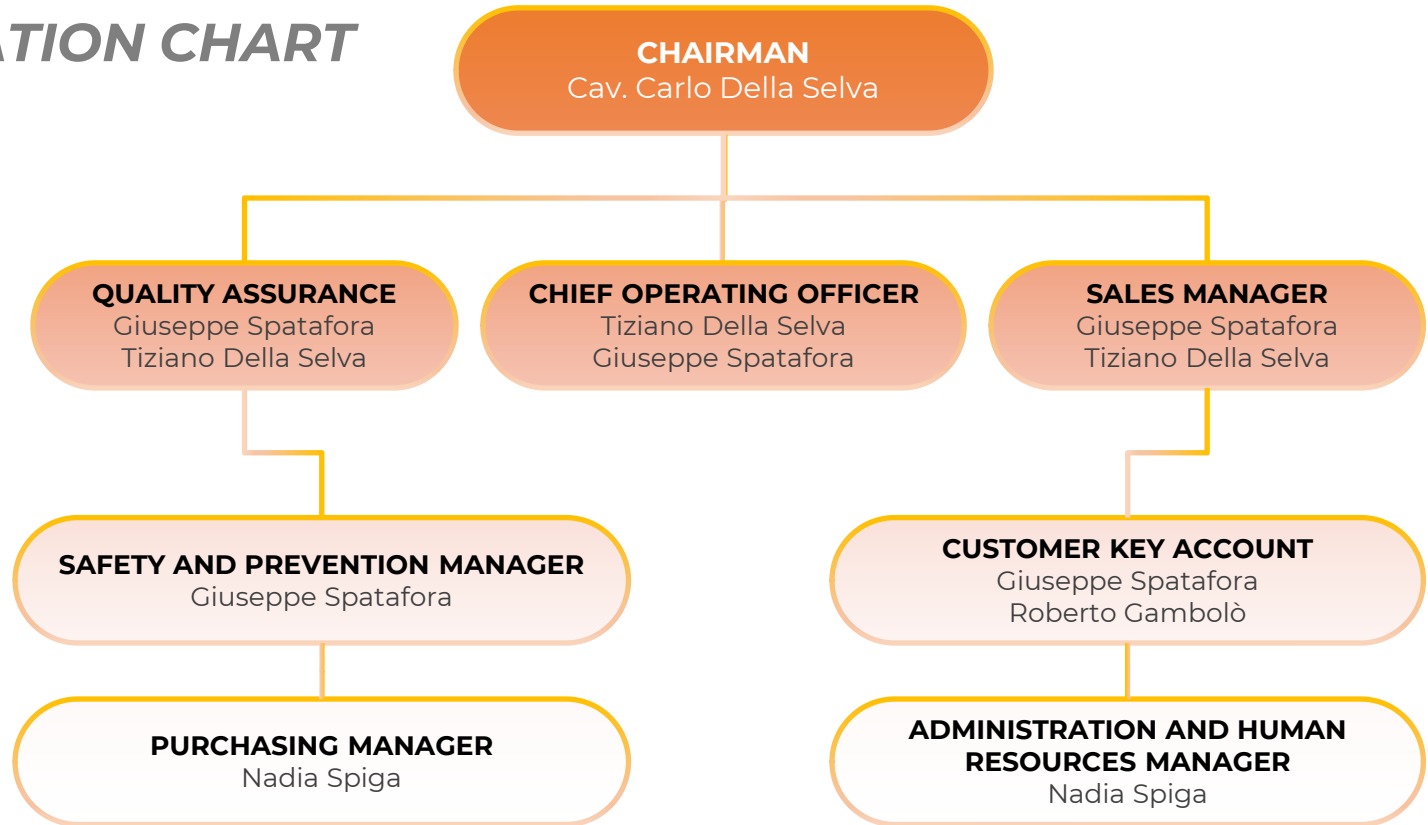




## TURNOVER DISTRIBUTION



# ORGANIZATION CHART 2024



## MAIN COSTUMERS

STELLANTIS

**Minebea**  
Passion to Exceed Precision



I V E C O  
G R O U P

**BAOMARC**

**Valeo**



**NSG**  
GROUP

**CNH**  
INDUSTRIAL

**SFC Solutions**

**STANDARD PROFIL**

**CLN**  
GROUP

**AGLA**  
POWER TRANSMISSION

**SOGEFI**



MA MW CLN MFB

**TECNOMECC**

**Webasto**  
Feel the drive



**Whirlpool**  
CORPORATION

**SAINT-GOBAIN**

# COVERACT Srl

*Sede centrale*

Via Dei Martiri, 39

10042 NICHELINO (TO) – ITALY

Tel. +39 011-358 75 15

Per ulteriori informazioni visita il sito

[www.coveract.it](http://www.coveract.it)



## CONTACTS

### **Giuseppe Spatafora**

*CEO and Sales Manager*

+39 366 6708291

[gspatafora@coveract.it](mailto:gspatafora@coveract.it)

### **Tiziano Della Selva**

*Business Process & Technical manager*

+39 345 1412136

[tdellaselva@coveract.it](mailto:tdellaselva@coveract.it)